



## Law Enforcement Health Benefits, Inc.

2233 Spring Garden Street • Philadelphia, Pa 19130 • (215) 763-8290 • [www.lehb.org](http://www.lehb.org)

*John J. Gattens, Administrator*

# Comprehensive Health Screening

- **Retinal/Eye Exam**– Takes photo of the inside of the eye to identify various health issues such as Diabetic/Hypertensive Retinopathy, Tumors or Cancer
- **Blood Draw**– identifies Prediabetes, Diabetes and High Cholesterol
- **Height, Weight, BMI and Blood Pressure**– identifies Obesity and Hypertension

March 16th – Police Academy– 8:00am-12:00pm

April 21st – LEHB – 10:00am-2:00pm

March 29th– 1st District – 8:00am-12:00pm

May 8th– FOP – 8:00am-12:00pm

April 11th – 8th District– 8:00am-12:00pm



Participants receive a  
\$10.00 WAWA giftcard  
& an LEHB gym bag!

**PLEASE CALL LEHB 215-763-8290  
( Kate, Ali or Phyllis) TO REGISTER**

- **Early Identification**
- **Early Intervention**
- **Longer Life/Better Health!**

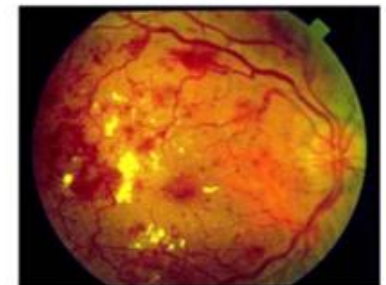


Photo of Diabetic Retinopathy